



The Air You Breathe

A free quarterly newsletter from Akron Regional Air Quality Management District.

VOLUME 32, ISSUE 1

FEBRUARY 2017

INSIDE THIS ISSUE:

Growing Link between AQ & Dementia 2

Political Tides Turn 2

AQ & Field Data 3

ACTAP Program Launch 4

Enforcement & Compliance History Online

From a blog post by US EPA staff member, Jessie Johnson

New Tools in Environmental Data Analysis:

There is a plethora of sources for environmental data, but it can often lead to a plethora of questions. How do you know where to go for the data? How can you visualize and interpret the data? The website I work on, Enforcement and Compliance History Online (ECHO), has been a resource to help answer these questions since it was launched in 2002. <https://echo.epa.gov/>

ECHO provides users the ability to search facilities that are in non-compliance with environmental laws and helps make EPA enforcement efforts and regulated entities' actions more transparent for the public. Comments from ECHO users allow us to continue to improve your access to environmental data.

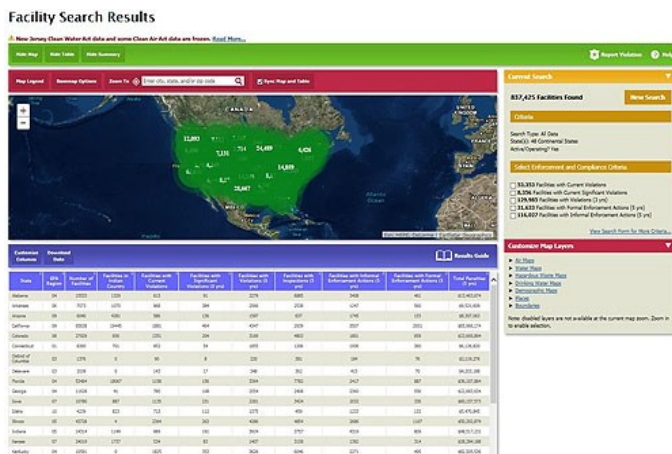
Our newest update is the new Facility Search Results page called "map filter" that will be launched this fall after testing and review is completed. The EPA ECHO team has worked to create a more user friendly and seamless search that models the new page off of commonly-used search engines. We will be offering easy-to-use filters, access to on-page media-specific search criteria, and customized mapping layer.

So what does all of that mean? With the new results page you will be able to complete a search while looking directly at the map meaning you can see that changes happening in your search occur as you

make them, allowing you to adjust your search along the way. The layers include tribal boundaries, hospitals, schools, and other demographic maps to help finish out the story of your map during your search. Our hope is that these changes will lead to a better understanding of enforcement data and more analysis of existing data.

As a geographic information system analyst, I am excited about this tool because I rely heavily on maps and visual aids, and I have found it very helpful to see my search occur on the screen in front of me. I think environmental analysis and decisions are based on many levels of information and not solely based on one facility or one set of data. These new additions will hopefully help the information stand out more, make it easier to understand and help deliver a more efficient product to our users.

Look out for trainings. You can subscribe to our listserv for updates, that will be coming along with the new search tool in late fall to help everyone make this transition seamless and hopefully help generate as much excitement as we have here for the new ECHO map filtering tool. <https://echo.epa.gov/resources/general-info/listserv>



ARAQMD recommends all of our facilities log in to ECHO and see what is posted about your business and check for any errors!

Air Pollution Link to Dementia Growing

For many years now, the link between health concerns and potential environmental exposures has been under more intense scrutiny. Most people understand there is a strong link between what we eat and drink and our overall health. It seems reasonable to expect that the air we breathe, and the pollutants it may or may not contain, could also have an impact on our personal health.

The connection to our respiratory health is relatively obvious. It's not hard to imagine that pollution that enters our lungs could damage our lungs, or that air pollutants can cause sinus issues. It's common sense that the system directly engaged with breathing would potentially be effected. And, the evidence is **strong** that air pollution can cause heart/ cardiovascular issues.

Evidence is even emerging to note that children who live in high pollution areas are at greater risk of obesity!!

Now we have a growing body of evidence that shows that living in areas with chronic expo-

sure to high amounts of traffic and its associated air pollution can put individuals at increased risk for developing dementia!

A study published in *The Lancet* looked at the incidence of dementia, Parkinson's disease, and multiple sclerosis in those living near major roadways. The study showed that those living closest to major traffic arteries were up to 12% more likely to be diagnosed with dementia. This study followed 6.6 million residents in Ontario for more than a decade.

The study does not directly prove a direct link, but shows an association that warrants further investigation.

We worry about the food or additives in our food supply and how they may impact our cognitive abilities over time. Perhaps we need to begin wondering if the pollution we create with our automobiles may also be of concern for our long term cognitive health.



For weekday
Air Quality
Index
updates and links to
timely articles & info.
like us,

**AKRON
REGIONAL
AIR QUALITY
MANAGEMENT
DISTRICT**
on
Facebook!



Join our growing
group of followers!

Political Tides Turn

With the new administration beginning to take shape, and President Trump making grand gestures toward fulfilling campaign promises, many who care about environmental regulations are feeling quite uncertain about the future. Many voices associated with the president's transition team were quite alarming in their "anti-regulation" sounding rhetoric. And, it is to be expected that there will be challenges ahead for both environmentalist groups and agencies like ours who enforce existing regulations.

Everything from roll backs to climate change regulations to reduced funding are keeping many people on edge, if not awake at night. For the time being, things

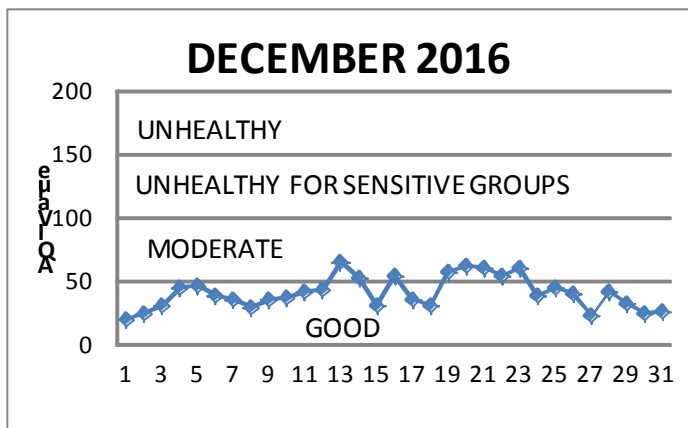
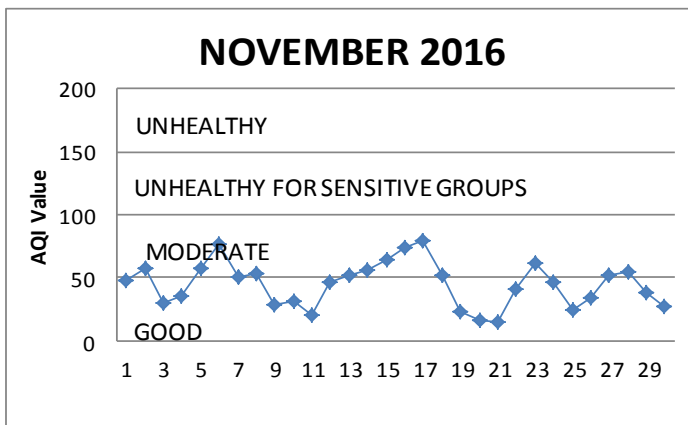
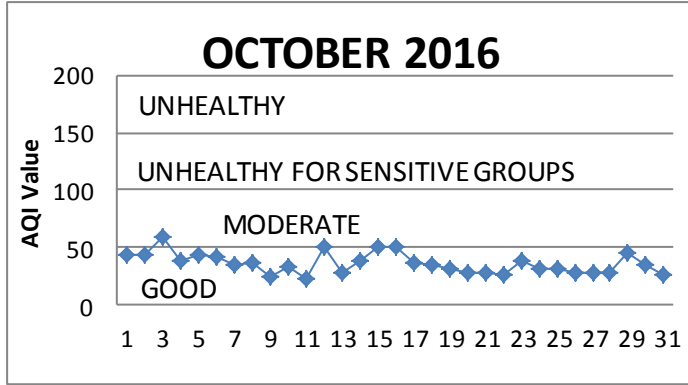
for ARAQMD remain largely stable. Funding for the near future appears predictable and not at immediate risk from fluctuations at the federal level.

Our goals of protecting the air quality in Medina, Summit and Portage counties remain the same. Our commitment to quality and customer service to both our regulated community and those who live, work and recreate within our communities remains unchanged. We will continue to strive to be a benefit to the community and do things like launch our compliance assistance program (see last page for details) to help keep our air as clean as we can.

We believe clean air is important for all!

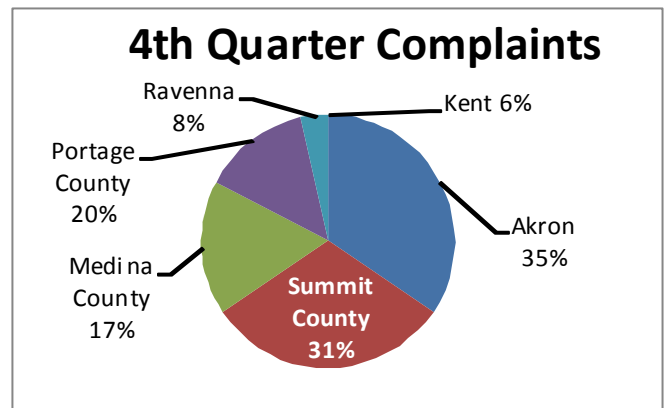
Statistic Snap Shot

4th Quarter 2016



4th Quarter 2016 Complaints

Area	Commercial/Industrial	Residential	Total
Akron	8	2	10
Summit County	5	4	9
Medina County	1	4	5
Portage County	1	3	4
Ravenna	0	1	1
Kent	0	0	0



Site Visits	4th Quarter 2016
FEPTIO	9
Title V	6
Non Title V	20
GDF	4
Full Compliance Evaluations	10

Permits Issued

Quarter	PTI		PTIO		TV		PBR
	Draft	Final	Draft	Final	Draft**	Final	
4th Q 2016	0	4	2	11	1	2	9

Asbestos		Indoor Air Quality Inquiries	
4th Q—Notifications	159	4th Q—3	
4th Q—Inspections	38		



1867 W. Market St.
Akron, OH 44313

Phone: 330.375.2480
Fax: 330.752.7792
Email: araqmd@schd.org
www.araqmd.org



Follow us on Facebook!
AQI, Pollen Counts,
AQ Advisory alerts & links to
informative AQ articles!

New ARAQMD Program to Launch March 2017

Rules, regulations, and reporting...Oh My! Navigating the myriad regulations in place for various business/industry can seem like a daunting prospect. And, if you think your business may be operating slightly out of compliance, but you're not 100% sure, who in the world do you call? You don't want to get a notice of violation with the potential fine? Or say you're starting from scratch, and want to make sure your business is operating 100% in compliance from the get-go? Do you need to hire a consultant to help get that done??

ARAQMD has long recognized the challenge the companies within our service area face. Air pollution regulations are just a small piece of the environmental, regulatory pie that it takes to operate a business. Our hope is that the new program we will offer will help our businesses achieve and maintain compliance with all applicable air quality regulations.

What will be known as the Akron Compliance & Technical Assistance Program or ACTAP, is scheduled to launch on March 6, 2017. Much of the service will be based on Ohio EPA's Office of Compliance Assistance & Pollution Prevention compliance assistance work, but



with the hyper-local focus the local air agency is known for.

One of our current Air Quality Engineers will transition to compliance assistance after many years of working as an air quality regulator. Megan Talcott will literally move her office to the far end of our building to ensure that all conversations with clients are confidential and not overheard by our regulatory staff.

Services that will be offered include:

- Rule applicability determinations
- Identifying exemptions
- Assistance with understanding reporting requirements
- Direction on possible technologies to employ for compliance with the regulations
- Permit assistance

Look for more information on our website, www.araqmd.org closer to March 6th!